

Product: Resco Multicube	Product Code: M-Cube
Approved Publication Date: October 2010	

## The Multicube® cubicle system

Resco's suspended Multicube® system gives clean lines and style, while ensuring easy clean by eliminating floor fixings. Being cantilevered off the back wall, it is designed to be suspended above the floor with no fixing to the ceiling. All Resco systems only use Compact Laminate, ensuring your cubicles are built to last in these wet and often high abuse areas.

### Recommended for

Offices  
Hotel complexes  
Shopping Centres  
Schools  
Sport & Recreational areas  
Community Clubs  
Camping & Caravan sites  
Public areas

### Features

#### Specific qualities of the Multicube® system

- Impervious panels, provides solutions for both toilet and shower situations
- Wide range of colours and finishes
- Strong and durable – 'built-for-purpose'
- Easy to clean and low maintenance
- Simple Clean looking design without old-style clashing strips
- 13 mm prefinished Compact Laminate panels
- Available as toilet and shower cubicles
- In line doors, flush with rebated fascias optimise privacy and provide a clean and tidy finish
- Die cast indicator bolt and coat hook/doorstop
- Aluminium fixed pin leaf hinge
- Suitable for cubicles between walls

#### Standard materials and manufacture

- 13 mm Compact Laminate panels
- Made-to-fit customised extrusions
- Die cast indicator bolt, finished in satin chrome
- Die cast coat hook/doorstop in satin chrome
- Aluminium fixed pin leaf hinge finished in satin chrome

#### Edge treatment

- No edging is required as Compact Laminate is a finished product, a simple furniture oil enhances the black edge

#### Options

- Shower shelves and brackets
- Privacy and modesty screens to match your colours
- Stainless steel hinged hold open or self-closing hinges available at no extra cost
- If accessible or return cubicles are required, a pedestal will need to be added. Call Resco to discuss further.

### Colours

#### Panel Colours

Multicube® is available in the Maica Compact Laminate stock colour range and the Laminex Compact Laminate range.

The Maica Accent colour range is also available on a 12-week lead time.



### Aluminium Colours

Multicube® extrusions are available in any of the Duralloy powder coating colour range from Dulux.

See the Web site or call for samples.

*See over page for typical system layout and sizing*

**MultiCube®**  
Suspended cubicle systems

## Dimensions

As cubicles are tailored to your measurements, depths and widths can be varied to suit most requirements. The Multicube's standard dimensions are:

- Height 2076 mm with 160 mm clearance
- Depth 1600 mm - 1800 mm
- Standard cubicle doors 610 mm (opening 596 mm)

## Durability and maintenance

- Compact Laminate panels means an extended product life
- Being a tough durable product it is perfect for high traffic locations and because it is impervious to water it is ideal in wet areas
- Minimal dirt traps under floating partitions



- Panels easily cleaned with mild detergent
- **10-year guarantee** on panel integrity and **2-years** on hardware

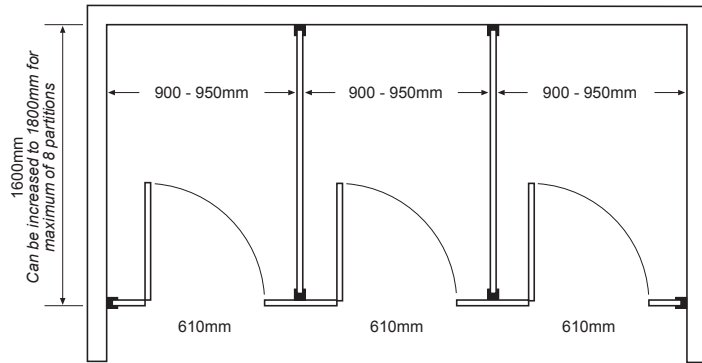


## Installation

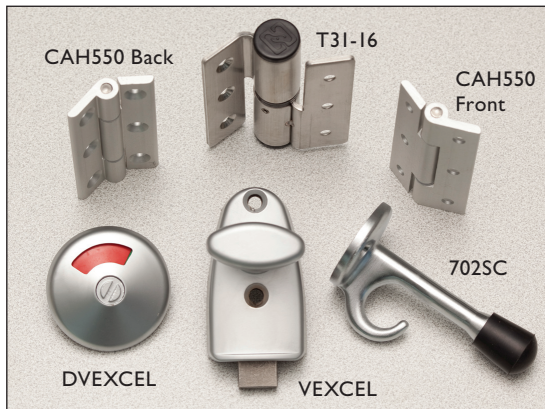
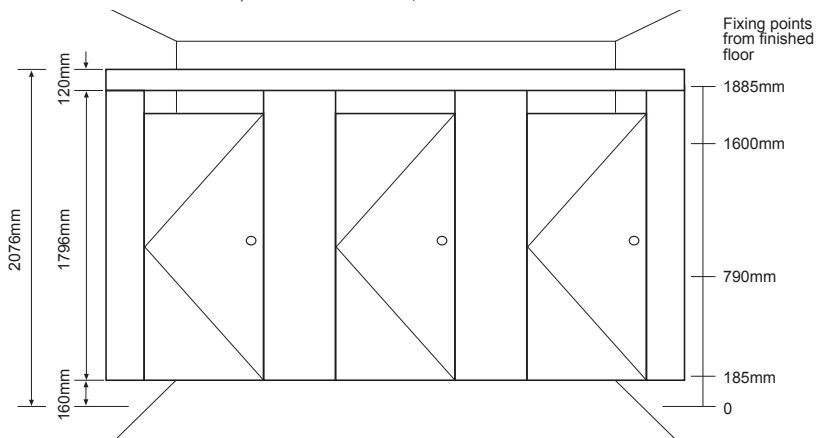
Resco has an installation service available. Or customers can install themselves as Resco cubicles come as a kitset delivered to site, which includes installation manuals and hardware.

Resco Multicube cubicle system - Indicative floor plan

The Multicube® suspended system is best in wall-to-wall configurations. Ensure that the back wall is sufficiently solid to support the Suspended Multicube® system - this can be done by using a vertical fixing the full height of the wall.



Resco Multicube cubicle system - Indicative front elevation



*Drawings show cubicles between walls, other configurations are available.*

*Quality hardware options available.*

## Contact

For pricing, email your plans or drawings to:

**info@resco.co.nz**  
or fax **07 850 1026**.

Call Resco on **0800 800 950** for their full range or visit the Web site **www.resco.co.nz** and click on **Multicube**.

# RESOCO

Resco Ltd  
23a The Boulevard  
Te Rapa Park  
Hamilton 3200

This information may change without notice.

**MultiCube®**  
Suspended cubicle systems